

Circular use of steel at Heerema



To be the **leading** marine contractor
creating **sustainable value(s)** for clients and stakeholders

Sustainability at Heerema

Because we care

Taking care of the
environment we work in

HEEREMA SUSTAINABILITY STRATEGY



Steel use at Heerema

**Creating business value by
improving environmental
impact and reduce
emissions.**

Key Figures

Yearly 8,000mT of construction steel in use

New steel 4,000mT

Material reuse rate ~50%

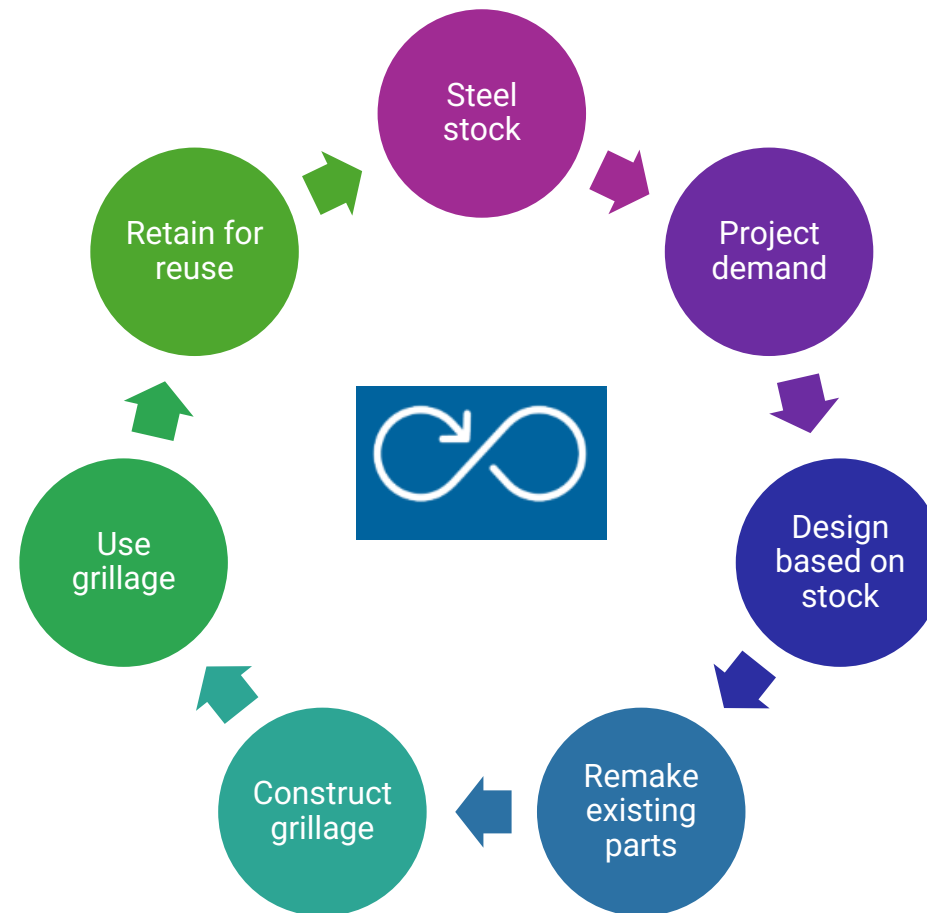
Emissions from new steel production 9,320mT

Approach

“An internal steel marketplace is like dating for projects—matching leftover steel with new opportunities!

Balancing the stakes of, tenders, projects, engineering procurement and equipment management”

Circular grillage strategy

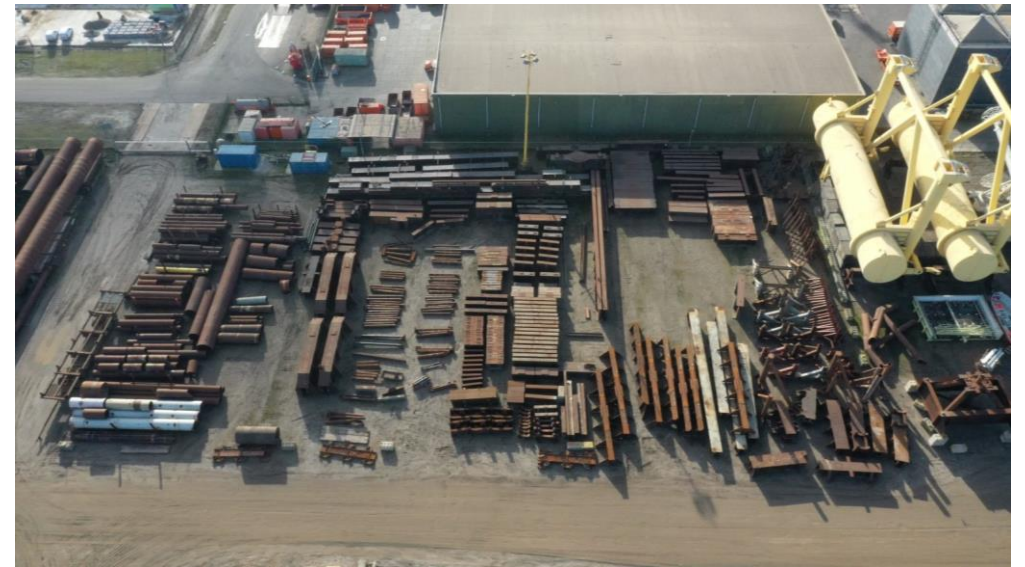


Steel Marketplace

“With a circular approach, steel isn’t just scrap; it’s the foundation for the next big projects.”

Setup - Stock material

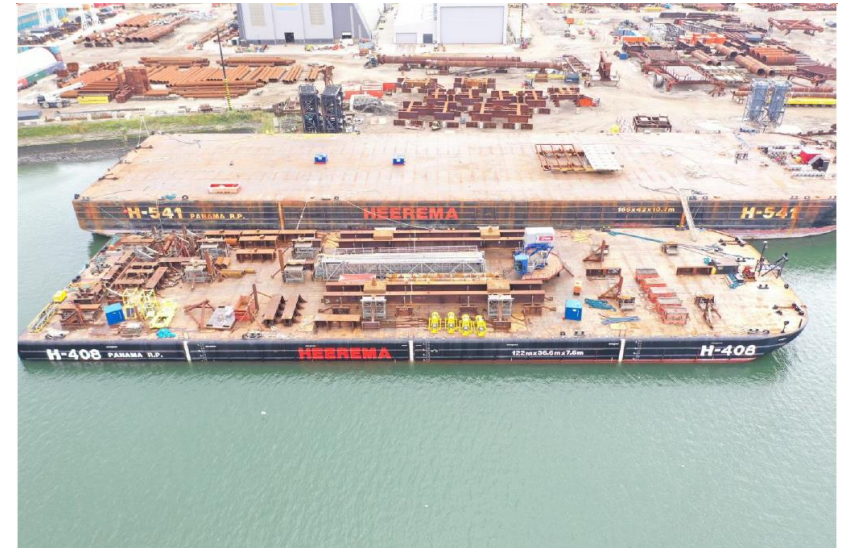
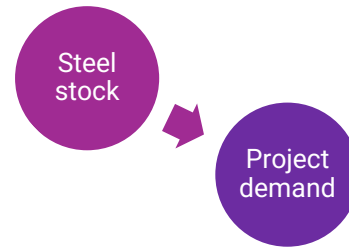
Steel
stock



Steel Marketplace

“With a circular approach, steel isn’t just scrap; it’s the foundation for the next big projects.”

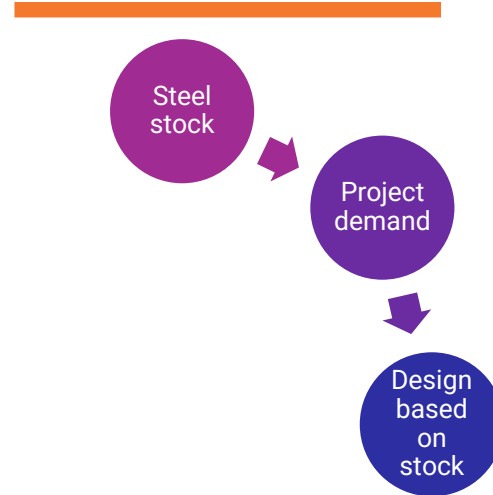
Setup – Tender / project



Steel Marketplace

“With a circular approach, steel isn’t just scrap; it’s the foundation for the next big projects.”

Setup



re-use of steel marketplace



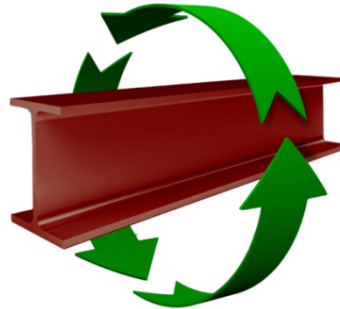
The objective of this Re-use Steel Marketplace

The re-use of steel available at HFG Flushing is promoted and supported by the Procurement department. Millions of USD's are earned by the re-use already. The logic behind the earning is that new steel is at least 10x more expensive than scrap material. In order to facilitate the re-use, it has been decided to create this "market place" in SharePoint. This "market place" is a tool for managing and promoting the re-use of steel, by:

1. facilitating engineering in providing an overview of available steel and giving the possibility to reserve the steel,
2. making the process for re-using of steel clear and explicit for all stakeholders,
3. keeping track of the re-use with a dashboard showing key indicators on for example the benefit in terms of earnings and CO2 reduction,
4. using the obtained data from the re-use for optimization of the process, for reducing costs and maximizing the benefits.

It should be noted that grillage ready for re-use "as is" can be found in INFOR, which might provide complementary possibilities to find a solution to your problem. So please do not hesitate to check INFOR as well.

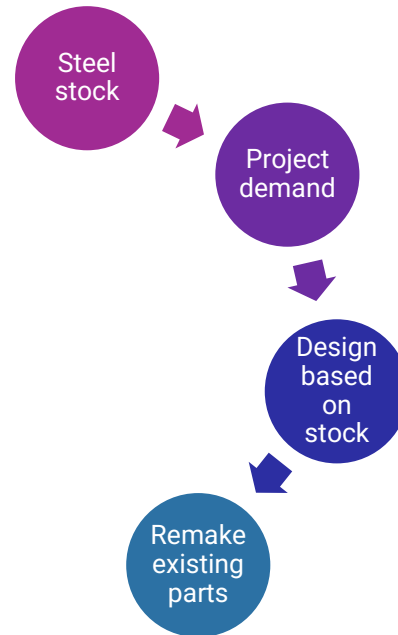
We hope this site will be helpful and beneficial to you in finding the best solution for Heerema.



Steel Marketplace

“With a circular approach, steel isn’t just scrap; it’s the foundation for the next big projects.”

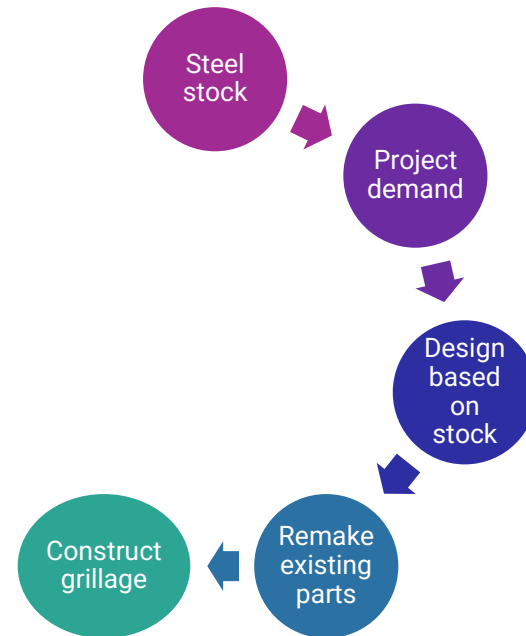
Setup



Steel Marketplace

“With a circular approach, steel isn’t just scrap; it’s the foundation for the next big projects.”

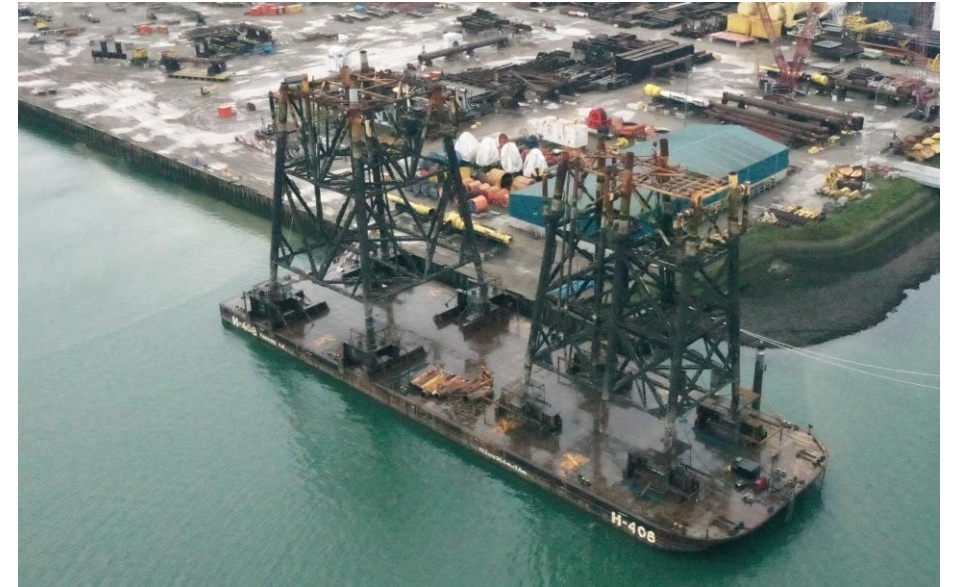
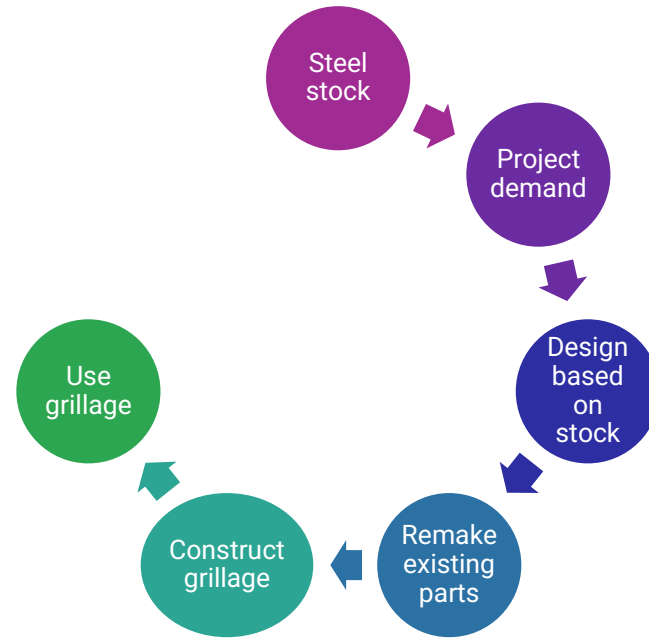
Setup



Steel Marketplace

“With a circular approach, steel isn’t just scrap; it’s the foundation for the next big projects.”

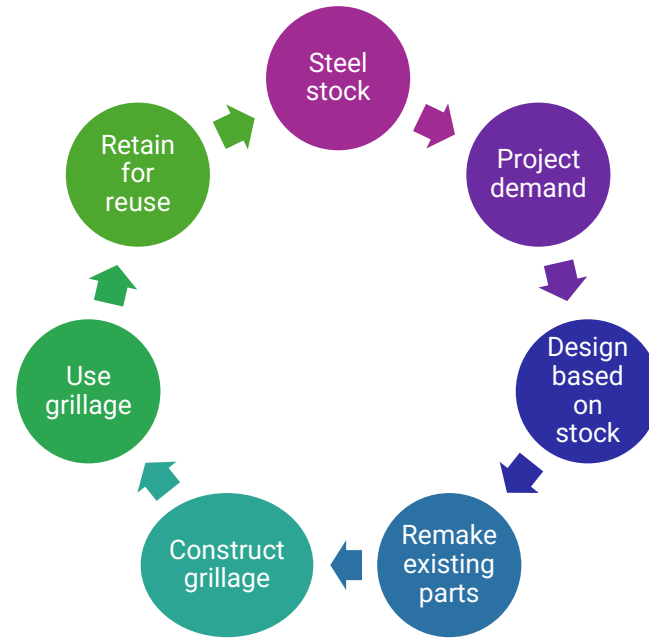
Setup



Steel Marketplace

“With a circular approach, steel isn’t just scrap; it’s the foundation for the next big projects.”

Setup



Challenges

"Challenges in circularity are opportunities to turn waste into innovation."

Scaling our impact – extending our horizon



Scrap or keep

- What to store, where to store and how long - Life cycle costing
- Logistical setup
- Cost of handling and remaking



Value chain integration

- Enable inflow from industry and clients to limit sector inflow.
- Ensure value retention in case of outflow– recycle as last resort.



Horizontal and vertical – Share steel within sector to decrease overall impact.



Circular design; design for reuse, remake, repurpose etc.



CIRCULAR HEEREMA

Eliminate Waste & Pollution

Circular Heerema

Eliminate waste, pollution and unnecessary use of resources by means of prevention, reusing and retaining.

Prevent



Sustainable Procurement



Circular Design



Measuring & Reporting

Reuse



Daily Practice



Education & Awareness



Resource Management



Circular Slings

Retain



Waste Stream Management



Project Demobilization



Circular Decommissioning

Making the impossible possible while creating sustainable value(s)

Daniël Biegel
Lead Circular
dbiegel@hmc-heerema.com

